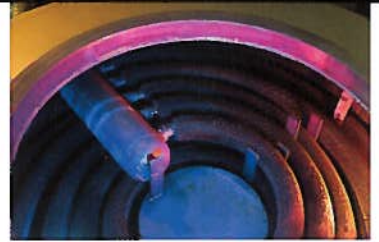


CYLINDRICAL ECONOMIZERS

No costly transitions and lower installation costs.

If your boiler application is larger (from 400 HP firetubes to 100,000 PPH watertubes), the Kentube specially designed and manufactured cylindrical economizer is for you.

- Incorporate a traditional design with water flowing on the inside of the tubes and with gas circulating over high frequency, resistance-welded fins
- Designed to fit into the stack
- Includes a sootblower integral to the unit
- Due to the circular design, doesn't require costly transitions
- Less expensive, and installation costs are also typically lower
- Designed and fabricated under the stringent requirements of ASME Section I or VIII, so you can absolutely depend on the unit's integrity



Finned tubing:

- *The Economizer's finned tubing is the key to great heat transfer and low cost.*

