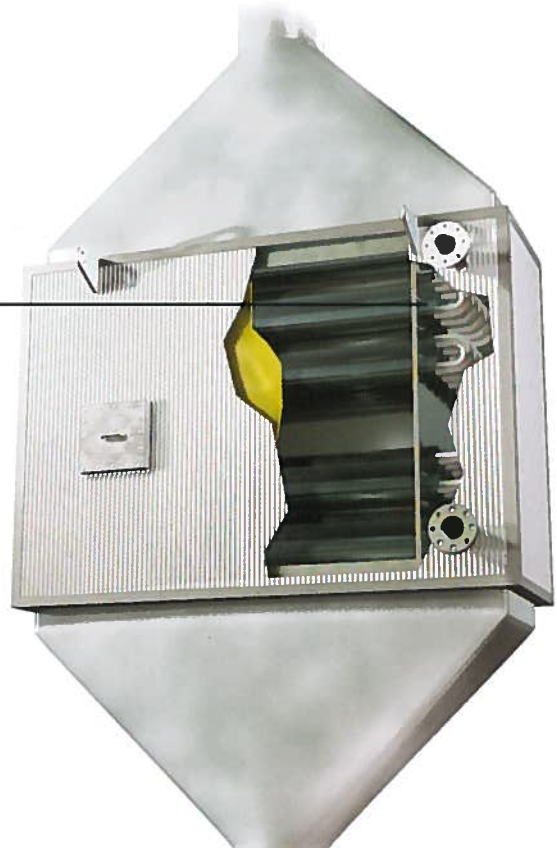
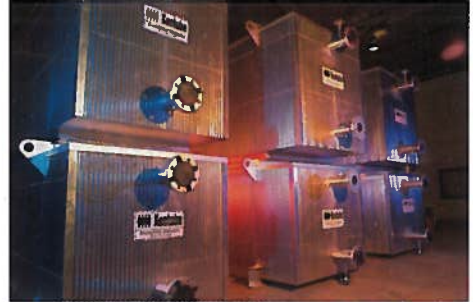


# RECTANGULAR ECONOMIZERS

## Big applications, big flexibility.

- Kentube's traditional economizer line
- Normally used for larger industrial watertube boilers
- Very adaptable to a wide variety of applications ranging in size from 15,000 PPH to 500,000 PPH and greater
- The most flexible design with configurations for:
  - Vertical or horizontal gas flow
  - Finned or bare tube designs
  - Clean or dirty fuels
  - Many other options
  - Modular designs available



### *Flexibility:*

- *The rectangular economizer is the most flexible design to accommodate the widest range of boilers.*